

По вопросам продаж и поддержки обращайтесь:

Архангельск (8182)63-90-72
Астана +7(7172)727-132
Белгород (4722)40-23-64
Брянск (4832)59-03-52
Владивосток (423)249-28-31
Волгоград (844)278-03-48
Вологда (8172)26-41-59
Воронеж (473)204-51-73
Екатеринбург (343)384-55-89
Иваново (4932)77-34-06
Ижевск (3412)26-03-58
Казань (843)206-01-48

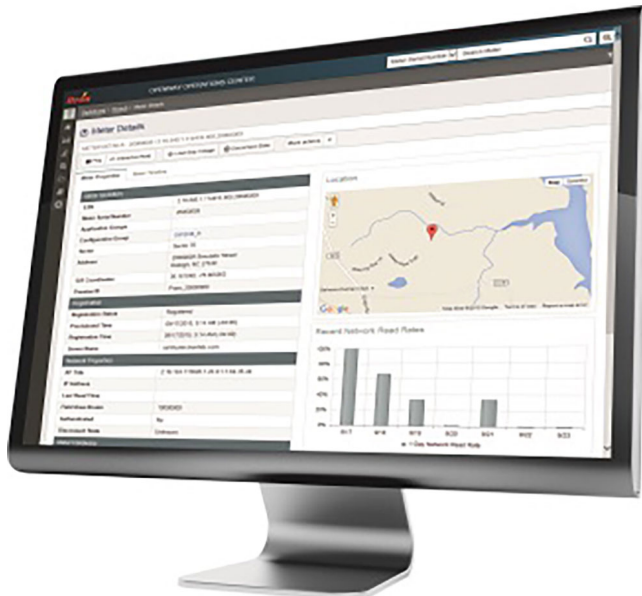
Калининград (4012)72-03-81
Калуга (4842)92-23-67
Кемерово (3842)65-04-62
Киров (8332)68-02-04
Краснодар (861)203-40-90
Красноярск (391)204-63-61
Курск (4712)77-13-04
Липецк (4742)52-20-81
Магнитогорск (3519)55-03-13
Москва (495)268-04-70
Мурманск (8152)59-64-93
Набережные Челны (8552)20-53-41

Нижний Новгород (831)429-08-12
Новокузнецк (3843)20-46-81
Новосибирск (383)227-86-73
Орел (4862)44-53-42
Оренбург (3532)37-68-04
Пенза (8412)22-31-16
Пермь (342)205-81-47
Ростов-на-Дону (863)308-18-15
Рязань (4912)46-61-64
Самара (846)206-03-16
Санкт-Петербург (812)309-46-40
Саратов (845)249-38-78

Смоленск (4812)29-41-54
Сочи (862)225-72-31
Ставрополь (8652)20-65-13
Тверь (4822)63-31-35
Томск (3822)98-41-53
Тула (4872)74-02-29
Тюмень (3452)66-21-18
Ульяновск (8422)24-23-59
Уфа (347)229-48-12
Челябинск (351)202-03-61
Череповец (8202)49-02-64
Ярославль (4852)69-52-93

сайт: <https://itron.nt-rt.ru/> || эл. почта ino@nt-rt.ru

ADDITIONAL IMAGES



AMI Operations Management

Realize operational savings, understand the state of your system and apply corrective actions where and when needed.

Your business processes are now dependent on timely and accurate meter data. AMI systems provide data on millions of endpoints and your focus should be on meeting the needs of your customers; not on dealing with AMI data. AMI Operations Management provides the tools, integrated with state-of-the-art data management applications to deliver accurate functional capabilities that enhance AMI operational efficiencies while managing and operating these systems at scale. By integrating seamlessly into your business operations, we take the necessary steps to ensure operational excellence, making your job easier.

Bridge Configurator

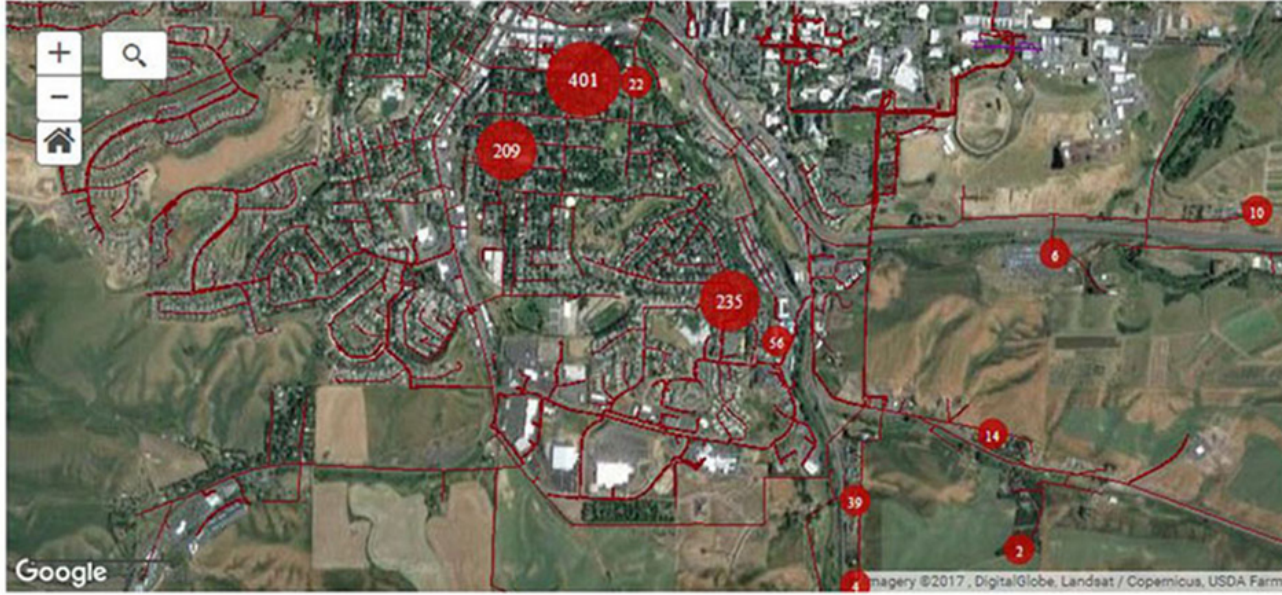


An easy-to-use Windows software tool that enables operators to quickly configure and troubleshoot small Itron networks, typically up to 25 devices. The Itron Bridge family provides high-performance, low-latency, and secure two-way RF communications for connecting devices such as line monitors, reclosers, and transformer monitors.

Itron Itron Analytics All Division

Outage Detection

Last refreshed at: 01:27:2017 2:44:05 pm



Google Imagery ©2017, DigitalGlobe, Landsat / Copernicus, USDA Farm

Current Interruption

Equipment Name	Equipment Type	Start Time	Number
B_SPU121	SubstationBank	01-27-2017 13:09:18	1903

Navigation: 10 items per page

[About Us](#) | [Terms](#)

Distributed Intelligence Applications

Our distributed intelligence applications, delivered in conjunction with our IoT-based network, deliver new and innovative approaches to solving critical challenges facing the world's power grids. By providing a powerful distributed intelligence platform and a third-party development environment, Itron Networks deliver an increasingly diverse ecosystem of smart meters, grid devices and distributed energy resources to communicate and collaborate intelligently in real time at the edge of the network to solve problems and manage rapidly changing conditions. Itron Networks take advantage of the latest developments in software-defined communications and affordable computing power to provide a robust distributed intelligence platform that can analyze high-resolution data at the edge of the network. Our distributed intelligence applications include significant improvements in outage detection and analysis, theft detection, transformer load management, renewables integration, demand response and detection of unsafe grid conditions, and also provide new opportunities to transform customer service. Through utilizing distributed intelligence applications, you will improve grid efficiency, reliability (SAIDI/MAIFI) and safety while transforming customer service and accommodating more distributed energy resources onto the grid.

Itron Enterprise Edition Meter Data Management



Itron Enterprise Edition (IEE) Meter Data Management System (MDMS) is an industry-leading data management solution for residential gas, water and electric meters, C&I meters and IoT sensors. Our ever-evolving platform provides you with the flexibility, value and functionality needed regardless of your deployment size.

For the larger IOU market, IEE MDMS is a highly scalable enterprise application that centralizes the collection, processing, storage and complex analysis of smart device data, device events and

alarms. For the municipal and cooperative market, IEE Essentials provides you with the focused capabilities of our industry-leading IEE MDMS to address your needs without sacrificing features or capabilities of the standard IEE offering—all while delivering a cost-effective solution.

IEE is the most globally deployed meter data management system in the world. Our installed base comprises over 100 customers across six continents with more than 45 million meters in production.

Itron Enterprise Edition MDUS



Itron Enterprise Edition™ ISAIM (Itron SAP AMI Integration Module) is Itron's meter data management system for use with SAP® for Utilities solutions and is an SAP-qualified business solution for MDUS (Meter Data Unification and Synchronization). This software, integrated with SAP solutions, provides utilities with a seamless, end-to-end business process, thereby reducing implementation time and risks and lowering total cost of ownership. It delivers a unified smart grid platform to utility customers around the globe.

Itron Enterprise Edition ISAIM provides utilities with a smart grid solution that offers integration with SAP AMI Integration for Utilities software. SAP-qualified business solutions are

complementary to SAP software offerings and provide additional choices and flexibility for organizations running SAP software. An SAP-qualified business solution is developed or integrated in accordance with SAP development guidelines, has certified integration with the SAP NetWeaver® technology platform and has undergone solution qualification by SAP to meet additional criteria. SAP-qualified business solutions address a specific business or technology focus, such as advanced metering infrastructure. They have an established track record of successfully serving customer needs in the focus areas selected by SAP.

The Itron software solution enables utilities to employ new energy conservation and customer engagement strategies while improving operational efficiency. Through integration with SAP for Utilities solutions, Itron Enterprise Edition ISAIM can address the changing demands in energy and water service delivery and manage our planet's most precious resources. Itron has eight implementations of Itron Enterprise Edition ISAIM spanning four countries (US, Canada, Malaysia, China).

Itron Enterprise Edition MDUS



Itron Enterprise Edition™ ISAIM (Itron SAP AMI Integration Module) is Itron's meter data management system for use with SAP® for Utilities solutions and is an SAP-qualified business solution for MDUS (Meter Data Unification and Synchronization). This software, integrated with SAP solutions, provides utilities with a seamless, end-to-end business process, thereby reducing implementation time and risks and lowering total cost of ownership. It delivers a unified smart grid platform to utility customers around the globe.

Itron Enterprise Edition ISAIM provides utilities with a smart grid solution that offers integration with SAP AMI Integration for Utilities software. SAP-qualified business solutions are

complementary to SAP software offerings and provide additional choices and flexibility for organizations running SAP software. An SAP-qualified business solution is developed or integrated in accordance with SAP development guidelines, has certified integration with the SAP NetWeaver® technology platform and has undergone solution qualification by SAP to meet additional criteria. SAP-qualified business solutions address a specific business or technology focus, such as advanced metering infrastructure. They have an established track record of successfully serving customer needs in the focus areas selected by SAP.

The Itron software solution enables utilities to employ new energy conservation and customer engagement strategies while improving operational efficiency. Through integration with SAP for Utilities solutions, Itron Enterprise Edition ISAIM can address the changing demands in energy and water service delivery and manage our planet's most precious resources. Itron has eight implementations of Itron Enterprise Edition ISAIM spanning four countries (US, Canada, Malaysia, China).

Forecast as a Service



?The full capabilities of the Itron Demand Forecasting System are also available in a cloud-based solution running on Microsoft® Azure. With this approach, Itron is responsible for system and model maintenance and monitoring. All you need to do is provide updated energy data, and Forecast as a Service delivers updated forecasts. You get the power

and accuracy of the Itron system without incurring the upfront cost of acquiring hardware and software, or incurring the on-going cost of operating and maintaining the system.

Forecast as a Service Uses Our Proven Forecast Platform:

- Uses Itron Automated Forecast System
- System used by most TSOs in North America
- Includes widely used, proven statistical engine
- Engine has larger user base (200+ current clients)
- Supports advanced modeling processes
 - Neural networks and machine learning
 - Ensemble forecasts
 - Multiple weather providers
 - Uncertainty modeling
 - Built-in correction

Forecast Manager

Sales & customer forecast management

Itron's Forecast Manager brings together sales forecasting, data management and reporting into a single integrated application. Forecast Manager automates the input of key data for forecasting and analyzing sales trends linking directly with MetrixND® forecast and weather impact models.

Firmware Upgrader FWU

Upgrades »
4.2.2c

[Copy](#) | [Archive](#)

Upgrade Details

Upgrade Manager

Devices

History

Start Stop Mark Complete

START TIME: -

Upgrade percentage complete:

100%

Details	Devices	Percentage
Succeeded	1	100%
Failed	0	0%
In Progress	-	0%
Total Devices	1	

Step	Idle	Running	Failed
Preparing	-	-	-
Seeds populating	-	-	-
Non-seeds populating	-	-	-
Restarting and Verifying	-	-	-

This upgrade has been marked as complete. It can no longer be run.

Alerts

Apr 23, 2018 2:55:07 PM PDT	Upgrade 4.2.2c completed. 1 device(s) have been upgraded to firmware version 4.2.002c.
Apr 23, 2018 2:55:07 PM PDT	Upgrade 4.2.2c completed a run with 1 success(es) and 0 failure(s).
Apr 23, 2018 2:55:07 PM PDT	Upgrade 4.2.2c started a run with 0 device(s).
Apr 23, 2018 2:55:07 PM PDT	Upgrade 4.2.2c will be auto-restarted, remaining auto restart count is: 0.
Apr 23, 2018 2:55:07 PM PDT	Upgrade 4.2.2c completed. 1 device(s) have been upgraded to firmware version 4.2.002c.
Apr 23, 2018 2:55:07 PM PDT	Upgrade 4.2.2c completed a run with 1 success(es) and 0 failure(s).
Apr 23, 2018 2:20:24 PM PDT	Upgrade 4.2.2c has finished retrieving network information for 1 device(s).
Apr 23, 2018 2:20:24 PM PDT	Upgrade 4.2.2c is retrieving network information for 1 device(s).
Apr 23, 2018 2:20:24 PM PDT	Upgrade 4.2.2c started a run with 1 device(s).
Apr 23, 2018 2:20:20 PM PDT	Upgrade 4.2.2c device import completed. Details
Apr 23, 2018 2:20:20 PM PDT	Upgrade 4.2.2c device import started. Details

An application used to manage the delivery and activation of firmware over the wireless mesh network and to provide image management, audits of upgrades, project management, and alerts related to the firmware update process.



Grid Connectivity

Demands of the modern electric grid are increasing faster than ever. Integrating solar power and other distributed energy resources, such as electric vehicles, while meeting increasing customer expectations is becoming more challenging. Achieving an accurate grid topology and balanced grid to support these demands has historically been challenging until now.

Achieving a balanced grid just got easier. Grid Connectivity, a component of grid management, uses an artificial intelligence (AI) approach that leverages meter voltage data (in the back office) to identify inaccurate connectivity information on your distribution grid. This enhanced analysis runs seamlessly in the background to help detect errors and exceptions, and provide immediate resolution using insightful connectivity models.

With Grid Connectivity, you can:

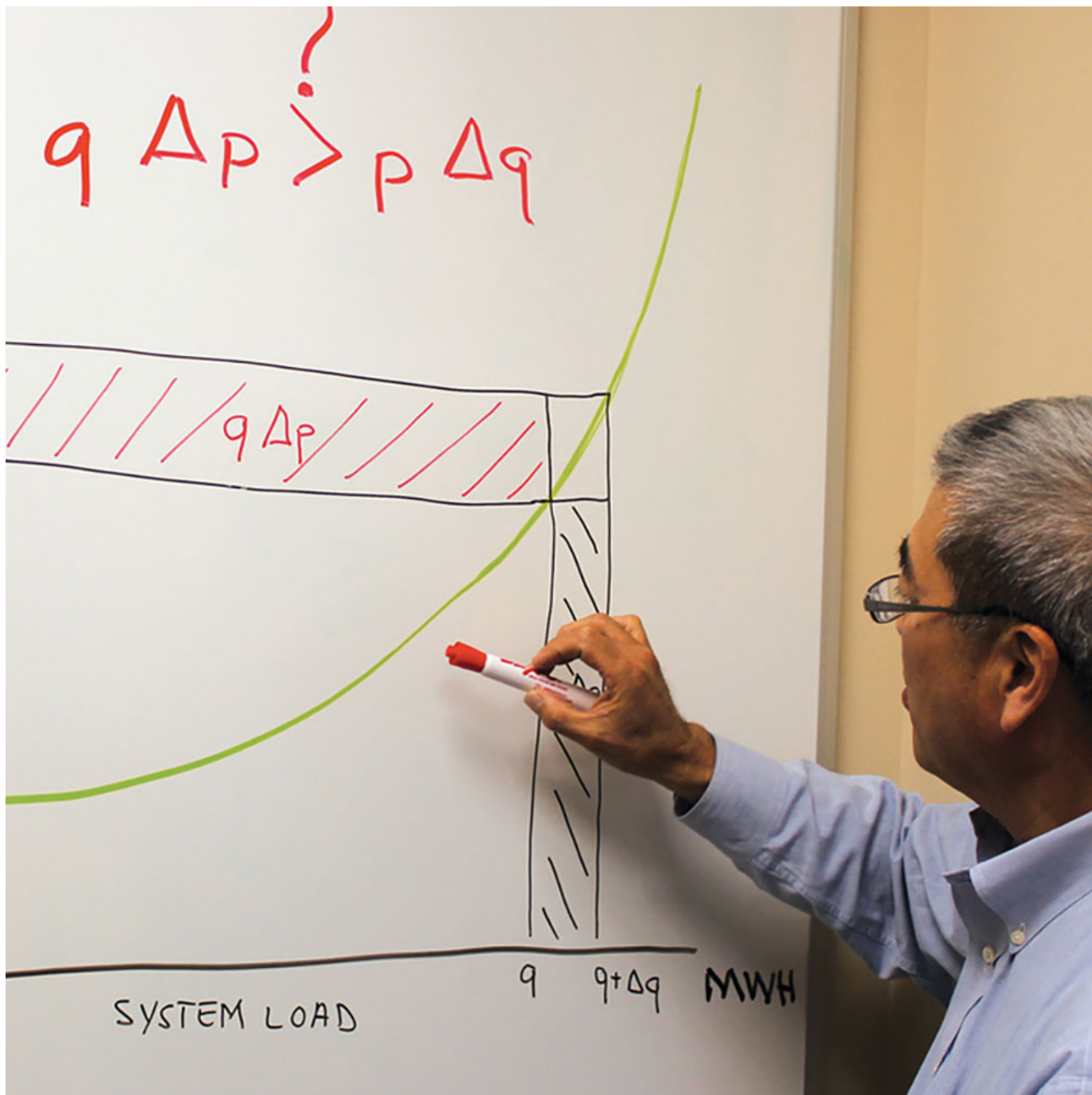
- Realize millions of dollars in savings per year in added business case value, depending on utility size
- Improve your load forecasting capabilities with an accurate connectivity model
- Optimize asset utilization and extend asset life
- Reduce outage response time management errors and improve SAIFI/CAIFI rates
- Improve many outcomes, such as outage and theft detection
- Reduce technical loss by phase balancing

Gridscape Configuration Server



An application used for configuring Access Points (APs) and MicroAPs in Itron's mesh networks.

IntelliMEASURE



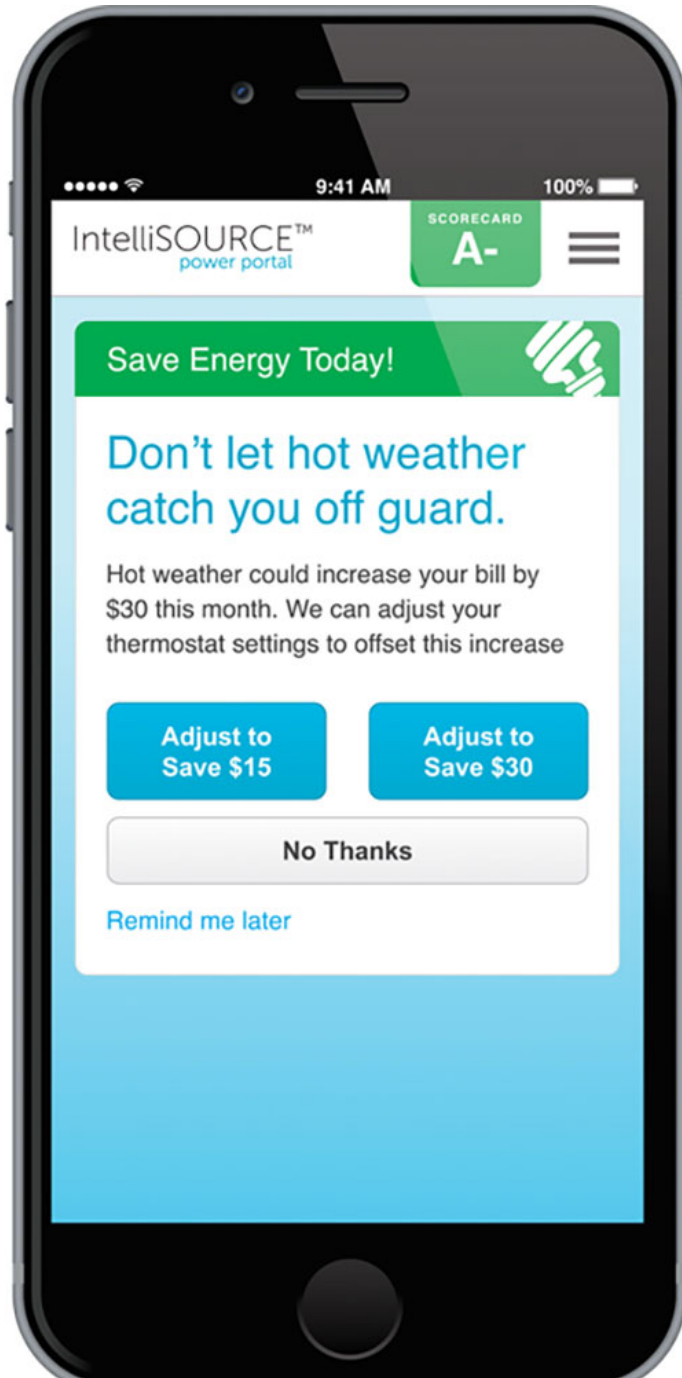
From verifying signals to profiling loads in real time, Itron's IntelliMEASURE[®] helps utilities achieve the full potential of their demand management programs. IntelliMEASURE tracks and measures the quantity and quality of any reduction during load control events. It receives insight into customer behavior, equipment functionality, energy

use, and energy demand. The result? A real-time decision-making tool for load control operators.

In addition, IntelliMEASURE helps utilities predict available load. That means you can determine how much capacity can be provided under various scenarios, gauge your program's effectiveness and achieve greater program efficiencies.

Benefits of the IntelliMEASURE service include:

- Track and measure the quantity and quality of any reduction during load management events
- Receive insight into customer behavior, equipment functionality, energy use, and energy demand
- Enable real-time decision-making for load management operator
- Predict available load and determine how much capacity can be provided under various scenarios
- Gauge program effectiveness and achieve greater program efficiencies



IntelliSOURCE-Connect

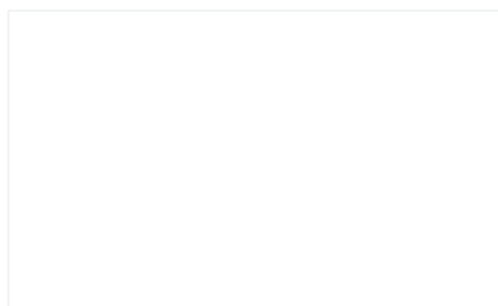
Leveraging third-party grid-connected devices purchased by consumers, bring your own device (BYOD) programs reduce the upfront capital and operational costs seen in traditional demand response programs. IntelliSOURCE-Connect™ gives utilities the ability to easily include popular retail Wi-Fi thermostats and other third-party devices in new or existing demand response and energy efficiency programs.

IntelliSOURCE-Connect provides secure enrollment, seamless engagement, and aggregated forecasting and dispatching capabilities with devices.

IntelliSOURCE Enterprise

IntelliSOURCE® Enterprise™ redefines the industry's expectations of a demand response management system (DRMS) by providing extensive additional capabilities such as integrated modules to manage energy efficiency programs and distributed energy resources.

IntelliSOURCE Enterprise is the only platform that automates every phase of demand response and energy efficiency programs, while also providing utilities a single operational view into all of their residential, small business and commercial and industrial demand energy management initiatives.



IntelliSOURCE Express

For electric cooperative or municipal utilities, IntelliSOURCE® Express™ is an enterprise demand response management system (DRMS) designed specifically to meet your needs.

The solution is preconfigured, enabling a rapid time to benefit through a cost-effective deployment. The preconfigured capabilities are based upon best practices Itron has developed from dozens of successful DRMS deployments.

Load Research System



Itron's state-of-the-art load research tool simplifies and strengthens load research processes with automation, a superior graphical interface and advanced analysis capabilities. Our system gives you the ability to develop efficient statistical samples and to estimate customer load profiles with the greatest possible accuracy and confidence.

Itron's Load Research System (LRS) supports a variety of load research processes, including sample design, sample selection, data transformation, sample expansion, and calibration of class loads to overall system loads. The Load Research System automates and streamlines the complex process of sampling and analyzing large quantities of load data. With its advanced graphical

interface, users can design, track and maintain load research samples and estimate customer load profiles with exceptional accuracy and confidence.

Operating system and user interface provided in English only.

MV-90 xi



MV-90 xi is a proven solution for interval data collection, management and analysis. MV-90 xi can be used as a data collection engine that interfaces to existing data management and analysis tools, or as an end-to-end interval data collection and management solution.

Operating system and user interface provided in English only.

MVLT xi



MVLT xi is multi-vendor laptop data collection software for use in conjunction with Itron's MV-90 xi or Itron Enterprise Edition™ (IEE) products. It is used to download load profile data from C&I meters that do not have a remote communication interface or for which the remote interface is not available. MVLT xi can read meters in the field through an optical or serial RS-232 interface or using telephone and IP communications.

Operating system and user interface provided in English only.

MetrixIDR Retail

Customer Portfolio And Delivery Point Forecasting

Energy retailers need timely and accurate forecasts to schedule their loads in day-ahead and balancing markets; Energy traders need accurate retail load forecasts to manage their risk. Itron's MetrixIDR is designed to meet both needs. MetrixIDR is a flexible system that generates sub-hourly, hourly or daily forecasts for lists of delivery points or portfolios of electric and gas retail customers, where the portfolio can be changed on a daily basis. By combining historical load data with weather and calendar information, MetrixIDR provides forecasters the ability to create forecast models for a large number of customers, manage a changing customer base, and monitor forecast-accuracy over time.

MetrixIDR System Operations



Automated Short-Term Load Forecasting

MetrixIDR is the most flexible and accurate short-term load forecasting system on the market and is ideal for forecasting total system loads, transmission zone loads, daily gas send-out and energy prices. MetrixIDR System Operations utilizes advanced neural network and regression model specifications, designed to capture linear and non-linear interactions between load, weather, and calendar information. A proprietary Dynamic Learning Algorithm ensures the forecasts are continuously tuned to the most recent loads.



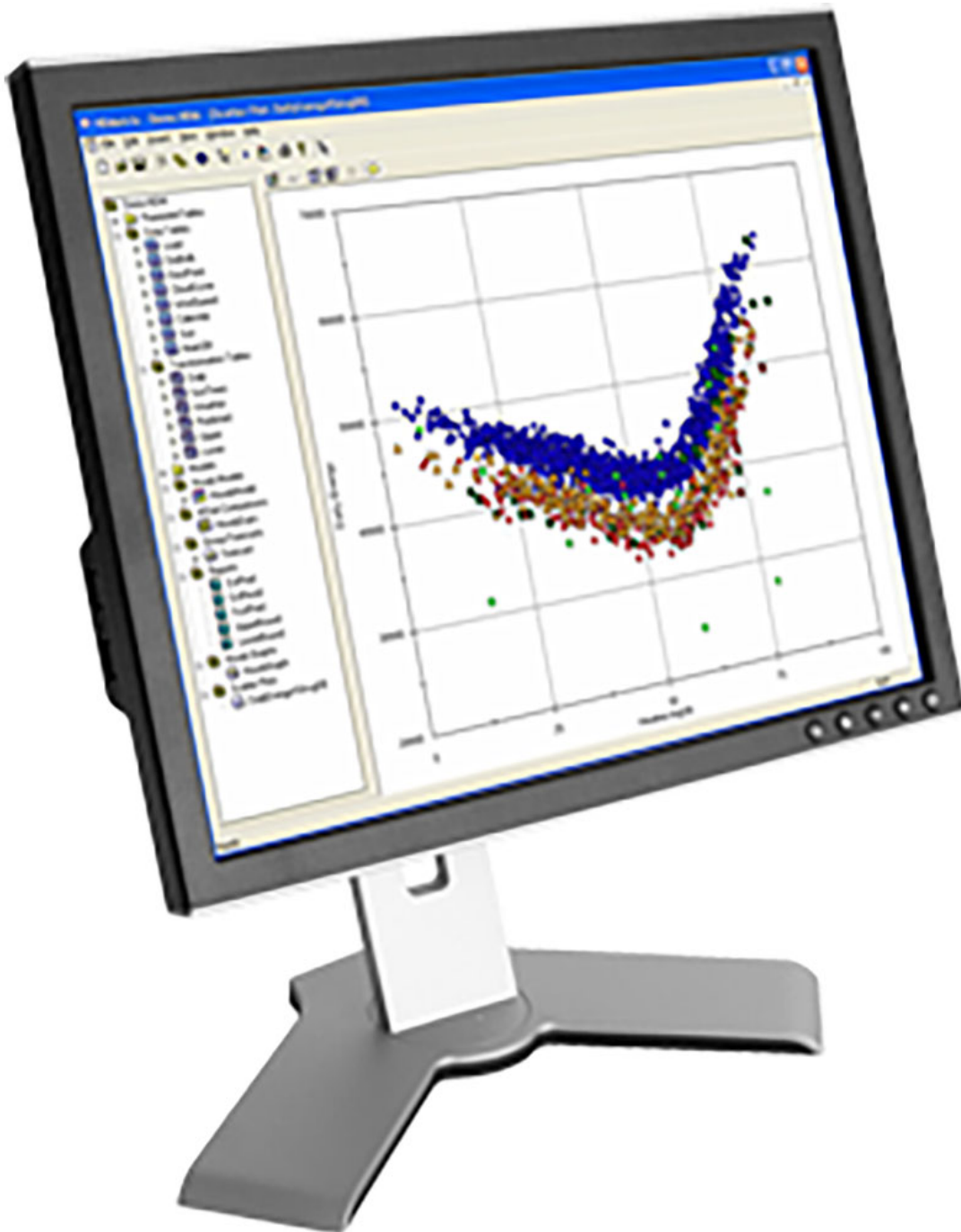
MetrixLT

Hourly Load Shape Forecasts

MetrixLT is a specialized tool for developing hourly and sub-hourly load forecasts to support utility generation, transmission and distribution planning. MetrixLT can be used to generate load shape forecasts by end use, class of service, system or other user defined segments for the current year or 50 years out.

Operating system and user interface provided in English only.

MetrixND



Flexible Modeling Tool

Itron's industry-leading forecasting engine allows rapid development of accurate forecasts. Its intuitive Windows®-based interface and drag-and-drop architecture streamline the development of forecasting variables and models.

MetrixND puts the power of the most advanced forecasting tools at your fingertips, enabling you to develop accurate load forecasts with confidence. Itron has developed, tested, and refined MetrixND for more than 10 years, providing a proven track record in the real world of energy forecasting.

Itron Mobile



Itron Mobile is a tool kit for collecting data and performing other field activities. It takes advantage of the latest mobile technologies used by utility employees. The Itron Mobile app runs on smart phones, tablets and laptops. It is available for Android, Apple iOS and Windows 10. Itron Mobile combines walk-by and drive-by features in a single app and leverages mobile technology to deliver valuable new outcomes. Itron Mobile includes a new handheld radio called the Itron Mobile Radio that can be used with any mobile device equipped with Bluetooth Low Energy. The MC3 radio can be used with the Itron Mobile app running on a Windows 10 laptop or tablet.

Mlogonline



An important offering for water operations management is the ability to effectively monitor and manage distribution leaks within a water distribution network. Using Itron's acoustic leak sensors placed strategically throughout a water distribution network, mlogonline enables unattended leak detection of existing or newly emerging leaks within a utility's water distribution lines.

The powerful mlogonline software enables you to:

- Detect emerging and existing leaks

- Track new and historic leaks
- Track noises
- Prioritize and rank potential leaks for field investigation
- Provide a mapping visualization tool of where potential leaks exist within the water system

Using mlogonline and Itron's leak sensors provides a targeted and systematic approach to optimize a utility's field workforce for maximum return on investment. mlogonline is the first permanent proactive tool for continuous assessment of pipeline integrity.

MV-PBS



The MV-PBS Complex Billing System offers energy providers a cost-effective solution for billing and financial settlement. MV-PBS integrates the complex billing function with upstream and downstream systems to meet the specific needs of commercial, industrial and wholesale energy users under a variety of complex rates, supply contracts, and schedules.

Operating system and user interface provided in English only.

MV-WEB



?MV-WEB is an online tool that provides your commercial and industrial customers secure and reliable access to their load profile data. MV-WEB also provides cost-effective, easy access to valuable customer load data for account representatives, load research and generation personnel, engineers, management, and other internal staff who don't have direct access to MV-90 xi.

Operating system and user interface provided in English only.

Revenue Assurance

Energy loss due to tampering continues to be a major concern for utilities. Offenders continue to become more sophisticated and are illegally diverting more energy than ever, increasing the need for electricity theft detection. Whether through relatively simple meter tampering or complex diversion schemes, energy diversion is a public safety concern and can have a considerable effect on a utility's bottom line. With Itron Revenue Assurance, you get a proven, industry-leading solution.

- Detect, investigate and mitigate non-technical losses
- Enhance electricity theft detection
- Quickly identify, monitor and manage potential losses and revenue leakages
- Alleviate safety concerns and enhance revenue by utilizing analysis and investigation tools
- Increase revenue, alleviate safety concerns, improve business operations

Devices

High-Resolution Data & Real-time Threshold Alerts

Utility Outcome



Meters



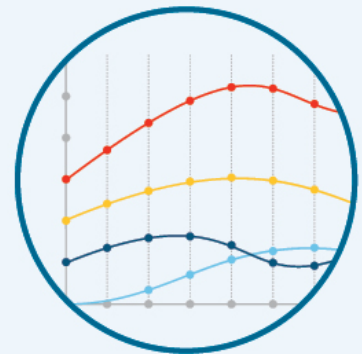
Load Control Devices



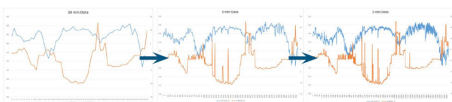
Streetlights



Data Lake



ADDITIONAL IMAGES



SensorIQ

SensorIQ turns your endpoints into smart sensors by providing high-resolution data and real-time alerts from smart electricity meters, load control switches and streetlights to manage a variety of analytics use cases outside of the meter-to-cash data flow. This enables users to realize significant savings for grid-related uses cases such as VVO/CVR, proactively manage potential safety issues such as high meter temperatures, improve asset failure prediction accuracy, and perform near real-time analytics and alerting. Examples of uses cases leveraging this high-frequency data include:

- Grid & power quality operations
- Revenue protection
- Customer service
- Demand response
- Demand-side management

Smart Pressure Management



Automatic Pressure Optimisation Solution

The challenge of accurately controlling pressure in a water network is complicated by the fact that pressure varies uniquely across each part of each network, constantly shifting with changing patterns of demand and outside events. Because of these variations, basic pressure management techniques either lock in a pressure level that is too high (or too low), or are unable to respond effectively to the changing demands on the network.

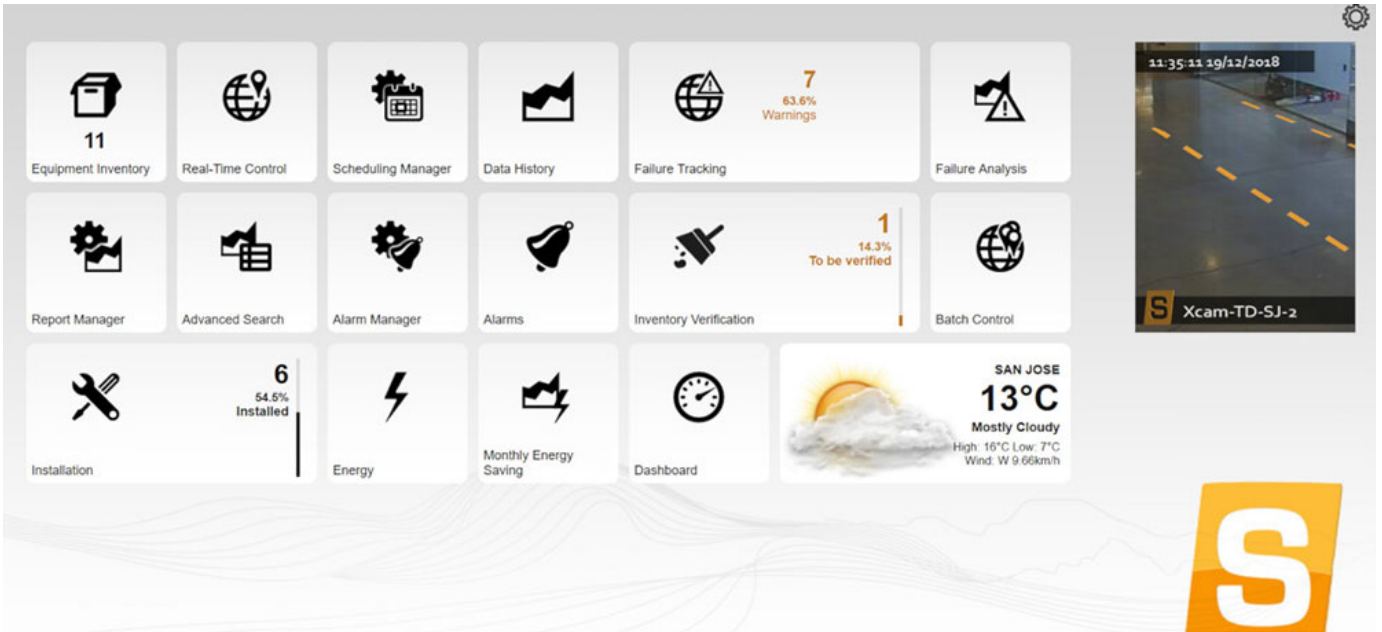
Smart Pressure Management overcomes these shortcomings with technology enabled to automatically and continuously optimise pressure across the network, based on the current

demand patterns and operating characteristics of that area of the network. The Smart Pressure Management solutions delivers these capabilities as part of an intelligent, network-wide technology platform, easy to install and operate.

The architecture of Itron Smart Pressure Management solutions is built around a new set of enterprise class software-based services, combined with highly intelligent loggers and controllers in the network to monitor network performance and control assets such as PRVs (Pressure Reducing Valves) and pumps.??

Streetlight.Vision

Streetlight.Vision (SL.V) is the world's leading smart cities central management software application that delivers advanced asset management, analytics and control capabilities to improve energy efficiency and optimize smart streetlight system performance. Manage and control numerous smart city sensors and devices over Itron's industrial IoT networks.



Temetra

Temetra is Itron's next-generation mobile meter data collection and management solution. Through an intuitive web-based interface and powerful mapping functionality, it provides you with new ways to optimize your operations. Temetra was built from the ground up as a cloud-based solution, allowing you to access and modify meter data and assignments anywhere through a simple web login rather than having to maintain locally installed software. All data is securely stored on servers that meet the ISO 27001 information security standard. With full Itron Mobile integration, Temetra provides you with a complete, cutting-edge mobile data collection package in the cloud.

Volt/VAR Optimization (VVO)



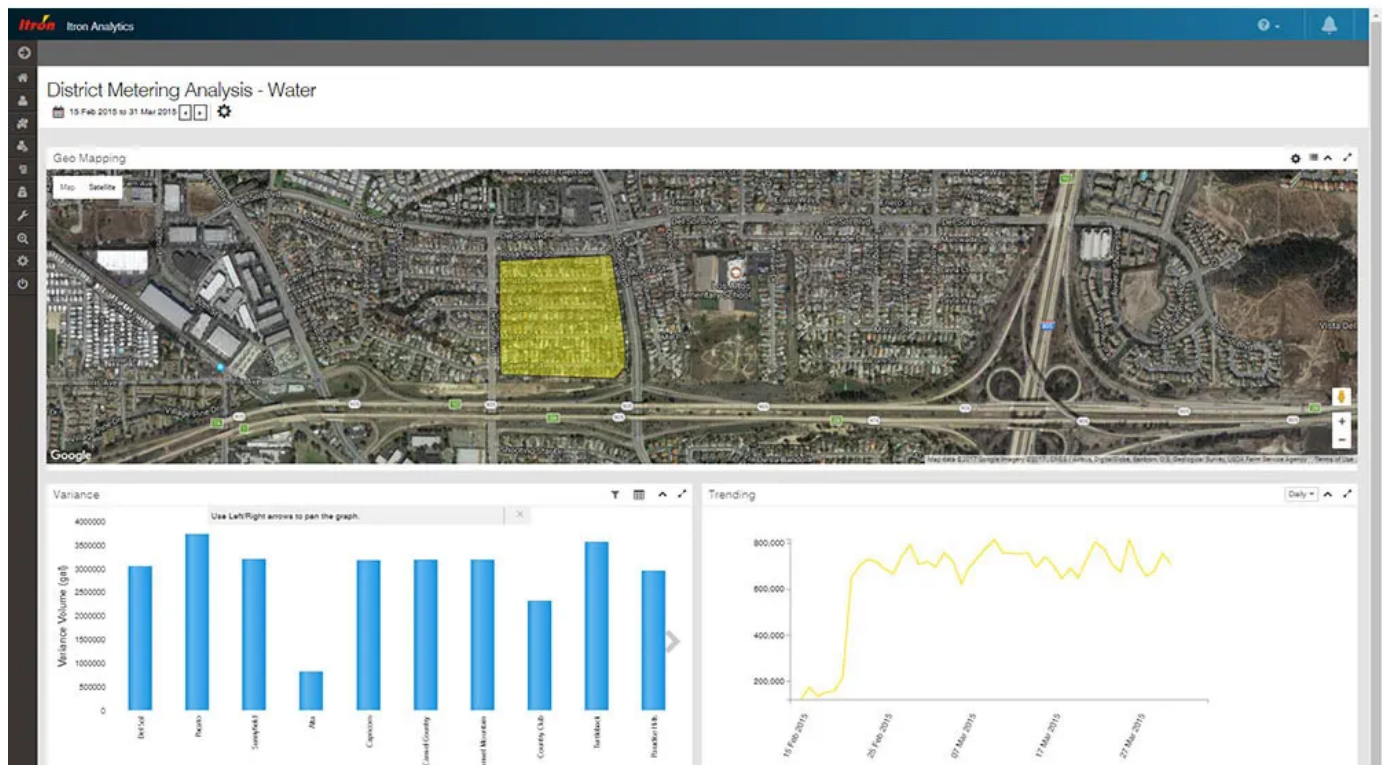
Volt/VAR Optimization (VVO) has been called one of the most innovative and potentially important technologies implemented across the grid. VVO safely reduces voltage delivered to end consumers in an effort to save energy. Leveraging the size and scale of the Itron/Utilidata joint VVO offering, utilities now can implement VVO more quickly and obtain savings faster.

The offering leverages Utilidata's proven VVO software which receives voltage signals from the distribution grid, including AMI. Then, using patented algorithms, it calculates optimum downstream voltages and sends signals to equipment to modify said voltage in real-time. Itron provides field services to install and configure the solution, offers AMI expertise as required, and

delivers network assistance for signaling and communications. The joint VVO solution provides valuable outcomes, including:

- Increased VVO deployment speed
- 3-5% energy savings
- Peak demand savings
- Potentially reduced CAPEX resulting from reduced peak demand cost
- Reduced carbon footprint
- Extended equipment life
- Increased quality and reliability of electricity delivered to end customers
- Facilitation of the safe integration of Distributed Energy Resources (DERs)

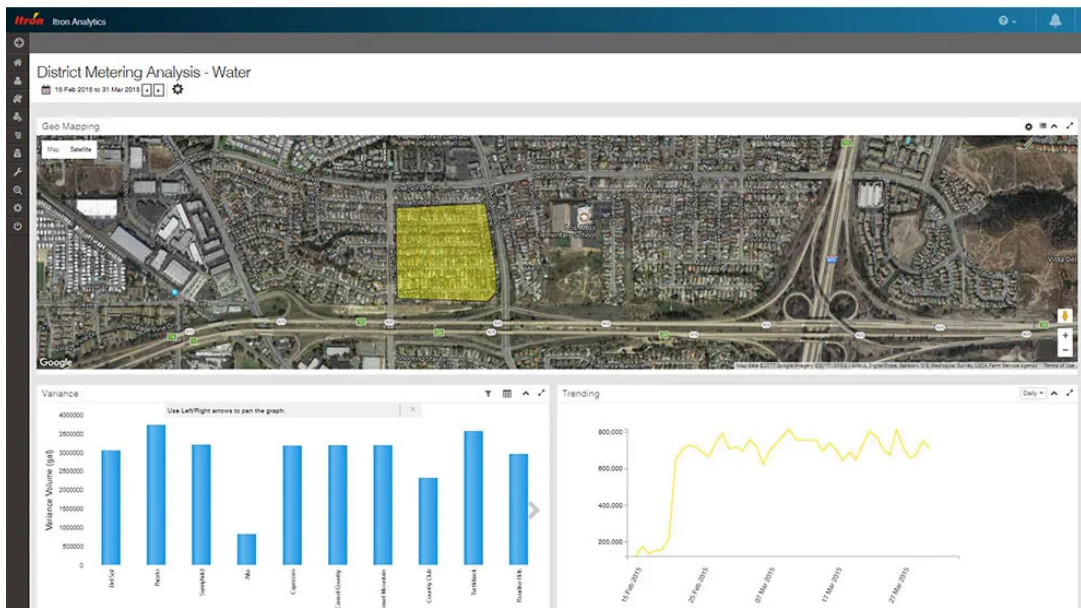
Water Operations Management



Optimize and efficiently manage water distribution networks

Asset management, revenue protection, operational efficiency, regulatory compliance and customer service are top of mind for water providers. By holistically optimizing distribution operations and leveraging solutions like hydraulic modeling software, pressure management and pressure sensing to efficiently manage your water networks, Itron helps you transform your network into a *smart* water network. Water Operations Management outcomes improve operational visibility, minimize leaks, increase cathodic protection, streamline pressure management, reduce labor costs, optimize network operations and proactively improve the customer experience. These outcomes help you identify, prioritize and take action to reduce non-revenue water (NRW) for both real and apparent water losses in your distribution network.

Water Operations Management



Optimize and efficiently manage water distribution networks

Asset management, revenue protection, operational efficiency, regulatory compliance and customer service are top of mind for water providers. By holistically optimizing distribution operations and leveraging solutions like hydraulic modeling software, pressure management and pressure sensing to efficiently manage your water networks, Itron helps you transform your network into a *smart* water network. Water Operations Management outcomes improve operational visibility, minimize leaks, increase cathodic protection, streamline pressure management, reduce labor costs, optimize network operations and proactively improve the customer experience. These outcomes help you identify, prioritize and take action to reduce non-revenue water (NRW) for both real and apparent water losses in your distribution network.

По вопросам продаж и поддержки обращайтесь:

Архангельск (8182)63-90-72
Астана +7(7172)727-132
Белгород (4722)40-23-64
Брянск (4832)59-03-52
Владивосток (423)249-28-31
Волгоград (844)278-03-48
Вологда (8172)26-41-59
Воронеж (473)204-51-73
Екатеринбург (343)384-55-89
Иваново (4932)77-34-06
Ижевск (3412)26-03-58
Казань (843)206-01-48

Калининград (4012)72-03-81
Калуга (4842)92-23-67
Кемерово (3842)65-04-62
Киров (8332)68-02-04
Краснодар (861)203-40-90
Красноярск (391)204-63-61
Курск (4712)77-13-04
Липецк (4742)52-20-81
Магнитогорск (3519)55-03-13
Москва (495)268-04-70
Мурманск (8152)59-64-93
Набережные Челны (8552)20-53-41

Нижний Новгород (831)429-08-12
Новокузнецк (3843)20-46-81
Новосибирск (383)227-86-73
Орел (4862)44-53-42
Оренбург (3532)37-68-04
Пенза (8412)22-31-16
Пермь (342)205-81-47
Ростов-на-Дону (863)308-18-15
Рязань (4912)46-61-64
Самара (846)206-03-16
Санкт-Петербург (812)309-46-40
Саратов (845)249-38-78

Смоленск (4812)29-41-54
Сочи (862)225-72-31
Ставрополь (8652)20-65-13
Тверь (4822)63-31-35
Томск (3822)98-41-53
Тула (4872)74-02-29
Тюмень (3452)66-21-18
Ульяновск (8422)24-23-59
Уфа (347)229-48-12
Челябинск (351)202-03-61
Череповец (8202)49-02-64
Ярославль (4852)69-52-93

сайт: <https://itron.nt-rt.ru/> || эл. почта ino@nt-rt.ru